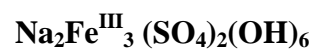


S⁶⁺

Natrojarosite



Mineralogical Group: **sulfate (VI-30-2)**
S environment: **tetrahedral coordinance**
Crystal system: **rhombohedral (R3m)**

Origin: **synthesized**
Chemical composition: **4.74% Na; 34.57% Fe; 1.25% H;**
13.23% S & 46.21% O
Preparation of sample: **yellow brownish powder**

Crystallinity state:

Acquisition mode: **fluorescence (photodiode)**

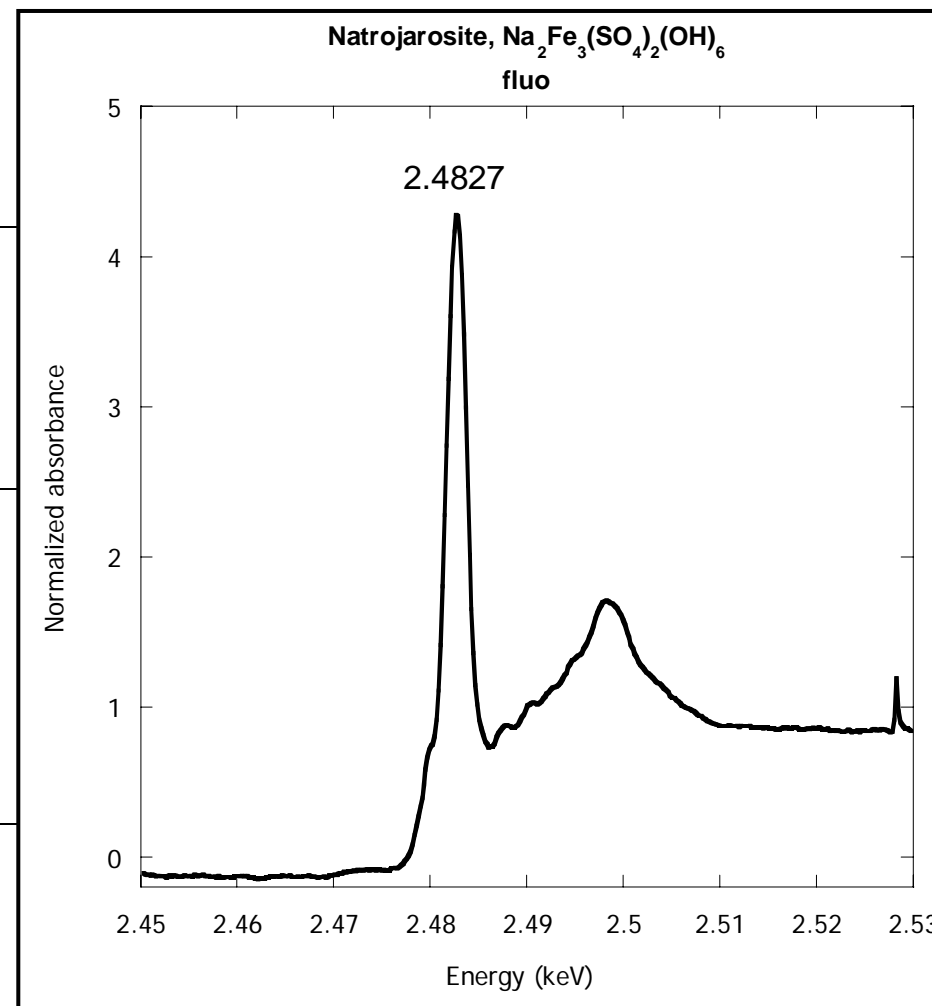
Date of acquisition: **13/09/2004**

X-ray absorption data (normalized): [natrojarosite_fluo_norm.dat](#)

Calibration with CaSO₄
Max of the “white-line” (s → p electronic transition) at **2.4825 KeV**

Contact person: **Sandström**

Author
Journal



Comments

Additional information